

Actavis International deliveries to Ulm

Delivery instructions

Content

- 1 General information..... 2
- 2 Pallet requirements 2
- 3 Pallet label..... 2
- 4 Finished goods requirements (only valid for German and Austrian market)..... 3
- 5 Transport organization for delivery in Ulm 4
- 6 Safety Data Sheet for hazardous goods (not applicable for finished goods) 4
- 7 Usage of data loggers 4
- 8 Further information 5

Delivery instructions Actavis International to Hub Ulm

1 General information

Delivery address for all products except narcotics is:

Merckle GmbH
Graf-Arco-Straße 3
89079 Ulm
GERMANY

2 Pallet requirements

The pallet size must be 80cm x 120cm. The pallet must be new or as good as new. Wooden (heat-treated) or plastic one-way pallets are generally allowed, but finished goods for the following markets require an EPAL EURO pallet (see appendix 1):

- Austria
- Denmark
- Finland
- Germany
- Great Britain
- Spain
- Sweden
- Switzerland

Maximum pallet height: 1.15 m

Maximum total pallet weight: 500 kg

3 Pallet label

Product and batch mixes on the pallet are not permitted. A pallet label must be attached to the long side and the cross side of the pallet. The pallet labels must be attached to the "securing skin" and not directly to the carton. The pallet label must contain the following information:

- Pieces per pallet
- Batch
- Expiry date
- Product description
- Teva SAP SKU number and/or MDG Code

The single packs must be packed in outer boxes; it is not allowed to use only one big outer packaging. The individual layers of the outer boxes must not exceed the size of the pallet and overlap.

Delivery instructions Actavis International to Hub Ulm

4 Finished goods requirements (only valid for German and Austrian market)

Product and batch mixing on the pallet and in boxes are not permitted. Boxes must be provided with a label. References to manufacturer or recipient on the labels or on the cartons are not permitted.

The box label must contain the following data:

- Teva material number (additionally as barcode)
- For products for DE: Pharmacy Central Number (PZN) (additionally as barcode)
- Package quantity (number of prepackages per shipping carton)
- Opened container quantity (plain text)
- Product/sales description
- Type of distribution (sales, clinical, sample or export)
- Country of distribution
- Batch number (additionally as barcode)
- Expiration date

The container label or barcodes must not be applied on edge. Teva provides a label program (barcode 39) including a user manual to create the label. This should also be used.

The following formats must be considered when using shipping cartons:

- Large carton (=maximum dimensions): 60 cm x 40 cm x 32 cm
- Medium carton: 30 cm x 40 cm x max. 32 cm (filling level)
- Small carton (=minimum dimensions): 30 cm x 20 cm x max. 20 cm (filling level)

Other formats should not be used if possible. The minimum dimensions are 24 cm x 20 cm x 11 cm. The shortest dimension of the base must be greater than the height, and the carton opening must always be on top.

For detailed specification for finished goods for German and Austrian markets, please visit Teva supplier portal:

https://www.teva.de/library/media/project/teva/company/lieferantenportal/alv_fertigwaren_up_date_mai18_englisch.pdf

Delivery instructions Actavis International to Hub Ulm

5 Transport organization for delivery in Ulm

If the supplier carries out the transport to the agreed destination himself or commissions a service provider to carry out the transport, the following goods acceptance times apply for goods receipt in Ulm:

Monday to Thursday: 07:00-15:00

Friday: 07:00-11:00

Time slots for delivery must be booked with Teva, registration via:

www2.cargoclix.com/merckle-ratiopharm

For technical questions the supplier Cargoclix is available to the supplier under the following contact data: timeslot@cargoclix.com or by phone +49 (0) 7233 - 97480

6 Safety Data Sheet for hazardous goods (not applicable for finished goods)

Where the delivered material is a hazardous good, the supplier is obliged to submit the current safety data sheet for the corresponding product pursuant to Regulation (EC) No. 1907/2006/EC, Annex 2 (in the current valid version) with the order confirmation.

In the event of changes, the supplier is obliged to provide Teva with each current version spontaneously and promptly.

The supplier must ensure that the registration number in the safety data sheet as-signed pursuant to Article 20(1) in the ordinance above is provided.

If the delivered product is not a hazardous good in the sense of the "Gefahrstoffverordnung" (German Hazardous Goods Ordinance), the supplier must confirm this in writing.

Please send the safety data sheets by email, with the purchase order number or Teva material number, to: msds@ratiopharm.de

7 Usage of data loggers

Each pharmaceutical transport must be equipped with data loggers.

In addition to finished goods and bulk supplies, this also applies to API. To assure that the product quality will not be adversely affected, for any API whose label claim is to store it at any controlled temperature (any temperature defined as a part of storage condition definition), the required storage condition/label claim for API should be maintained also during the transportation.

Delivery instructions Actavis International to Hub Ulm

In order to demonstrate the quality of your products during transport to Teva, each shipment should contain temperature data logger (recommended Sensitech TempTale4 ® USB which does not require software installation for reading the data from the logger). As per Teva corporate SOP 0048, the number of data loggers by shipment is (if not any different agreed on QTA with supplier):

- Road delivery FTL: 2 data loggers per truck
- Road delivery LTL: 2 data loggers per order
- Sea freight: 2 data loggers per sea container
- Air freight: 1 data logger per shipping pallet

We kindly ask for your help in ensuring adequate documentation of this process. Prior preparation of the shipment with data loggers, please do the following actions:

1. Prepare data loggers, verify calibration validity and activate it according the producer's manual. Data loggers must be labelled with date and batch designation.
2. Attached data loggers to the pallet outside the package in a separate carton, mark the pallet/carton with the information "DATA LOGGER ATTACHED".
3. The position of the data loggers should be defined based on your risk assessment or qualification documentation related for the equipment used for the transport.
4. Record the data loggers' data/serial numbers and affected pallets on the shipping documents following the shipment.
5. Record on the shipping documents the date and time of the transportation start.

8 Further information

For further information or questions please contact your business partner or find the general detailed delivery instructions via the following links:

- Delivery instructions general information:
https://www.teva.de/library/media/project/teva/company/lieferantenportal/delivery_instructions_general_section_20180516-v2.pdf
- Special instructions for finished goods:
https://www.teva.de/library/media/project/teva/company/lieferantenportal/alv_fertigwaren_update_mai18_englisch.pdf

Appendix 1

EPAL EUROPALETTE

800 x 1.200 mm



Die Arbeit der European Pallet Association e.V., ihrer Nationalkomitees und Lizenznehmer bildet das stabile Fundament für den erfolgreichen, offenen Palettenpool und ermöglicht den globalen Tausch von EPAL-Ladungsträgern. Weltweit befinden sich mehr als 450 Millionen EPAL-Paletten im Umlauf, die branchenübergreifend genutzt werden und aus Industrie und Logistik nicht mehr wegzudenken sind. Die akribische Anpassung an die Bedürfnisse des Marktes ermöglichte es, dass europaweit nahezu alle Lager- und Transportsysteme auf die Standardmaße abgestimmt sind. Dauerhafte Qualitätssicherung sowie hochwertige Materialien bieten eine störungsfreie und sichere Performance für Nutzer und Ladung. Ökologische und ökonomische Ressourcen werden durch Mehrfachnutzung in erheblichem Maße geschont.

DATEN & FAKTEN

Material: 11 Bretter aus Qualitätsholz, 9 Formsparr- bzw. Vollholzklotze, 78 Nägel. Fertigung gemäß dem Technischen Regelwerk der EPAL.

Länge 800 mm
Breite 1.200 mm
Höhe 144 mm
Gewicht ca. 25 kg
Tragfähigkeit 1.500 kg

Bei der Stapelung von beladenen Paletten auf einem soliden und ebenen Untergrund sollte eine Belastung der untersten Palette nur bis max. 5.500 kg erfolgen.

KENNEICHNUNGEN



„EPAL im Oval“ auf linkem und rechtem Eckklotz (seit 08. 2013)



IPPC Zeichen, Länder-Code, Registriernummer der zuständigen Pflanzenschutzbehörde, Hitzebehandelt (Heat Treatment), Lizenznummer-Jahr-Monat auf Mittelklotz

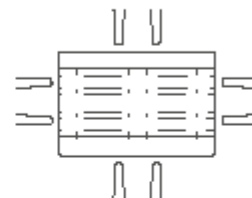


EPAL-Prüfklammern

HANDLING

4-seitige Befahrbarkeit und beidseitig gefaste Bodenbretter ermöglichen eine hocheffektive Handhabung bei Produktion, Lagerung und Transport in der gesamten SupplyChain.

Kompatibel mit allen (gängigen) Standardladungsträgern, Flurförderzeugen und Lagersystemen.



QUALITÄTSKONTROLLE

Der internationale Pool aus EPAL-Ladungsträgern unterliegt als einziger Ladungsträgerpool weltweit der unabhängigen Qualitätskontrolle durch externe Prüforganisationen. Nur so kann die gleichbleibend hohe Qualität garantiert werden, die EPAL-Ladungsträger den Märkten anbieten.



ISPM 15



Die Einhaltung des ISPM 15 Standards ist die wichtigste Bedingung, um Ladungsträger uneingeschränkt im internationalen Warenverkehr einsetzen zu können. Deshalb werden alle

EPAL Europaletten nach den strengen Vorgaben des IPPC hergestellt und sind somit weltweit einsetzbar. Die lokalen Pflanzenschutzämter geben Auskunft darüber, in welchen Ländern der IPPC Standard anerkannt ist.

REPARATUR



Beschädigte EPAL Europaletten können bei allen EPAL-lizenzierten Palettenreparaturbetrieben kostengünstig und klimafreundlich repariert werden. Normgerecht reparierte EPAL Europaletten erhalten nach der qualitätsgeprüften Reparatur einen Prüfnagel mit dem Markenzeichen EPAL und der Lizenznummer des Reparaturbetriebes.

FB 1.2/2019 DE